

**PEACE OF
MIND**
COMES STANDARD



**Coverage Comparison of
Limited RV Warranty for Life Coverage
and Typical Service Contract**

SERVICE CONTRACT: MAXIMUM COVERAGE (EXCLUSIONARY) (MENTS)

In addition to all components listed, all parts of the UNIT are covered, except those listed in the Exclusion section on the service contract.

SUSPENSION SYSTEM - Leaf and coil springs, shackles and bushings and rubber suspension springs

AIR CONDITIONING - Compressor, evaporator, condenser, capacitors, relays, expansion valve, control module and panel, reversing valve, blower fan and motor and PC board ceiling ventilation fans and motors, thermostat and heat strips.

POWER STEPS - Power step, lines, fittings, cylinders, worm gears, electrical switches and wiring harness, entry door floor motor and mechanism.

LEVELING SYSTEM - Factory installed electric/hydraulic leveling jacks, controller, electrical switches and wiring harness.

INTERIOR AND EXTERIOR COMPONENTS - (factory/dealer installed only) - Door handles, latches and springs, hood latches and springs, door chimes, clock, power window curtain motors/shade motors, awning motor, awning mechanism, awning sensor, shore power cord and retractor.

ENTERTAINMENT COMPONENTS - (factory/dealer installed only) - Stereo receiver, CD player, 40" or smaller television set(s), tuner, DVD player, satellite system, television antenna and rotator.

GENERATOR/POWER PLANT COMPONENTS - Power plant engine block and cylinder heads, if damaged as a result of the failure of an internally lubricated part. All internally-lubricated parts contained within the power plant engine. Alternator, starter, manually-operated switches, voltage regulator, power converter-inverter, PC boards, fuel pump, hour meter.

FRESH/WASTE WATER - Shower assembly, toilet, sink, holding tanks, gate valves, macerator pump, water pump, faucets, traps, fittings, hot water tank, burner assembly, thermostat, thermocouple, gas valve, electronic ignition assembly, PC board, diesel/electric heating system, water purification system, and water lines.

LP GAS - Gas regulators, gas tanks, gas valves, tank gauges, LP lines and fittings, emergency shut off system, gas leak detector and carbon monoxide monitor.

SEALS AND GASKETS - Seals and Gaskets are covered for all listed parts.

WEAR AND TEAR - Normal wear and tear is covered for all parts of the UNIT except for what is listed in the Exclusions section.

DELUXE APPLIANCES - Icemaker, trash compactor, built-in coffee maker, built-in food processor, in-sink disposal, ceiling fan motor and smoke detector, dishwasher, basement refrigerator/freezer, central vacuum cleaner system, fold out external grill and clothes washer/dryer.

CRANK SYSTEM (POP-UP CAMPERS) - Cables, pulleys and metal frame.

BRAKE SYSTEM - Wheel cylinders, calipers, magnets, master cylinder, metal-only hydraulic tubing and metal fittings, drums and rotors (when in conjunction with a covered repair).

KITCHEN CENTER - Range/oven burner assembly, burner valves, refrigerator/freezer, microwave, convection oven, thermostat, thermocouple, burner, igniter and PC board.

SLIDE OUT SYSTEM - Slide out room motor(s), guides, tracks and hydraulic valves, sliding floor motor, pump/jack assembly, electrical switches and wiring harness.

HEATING - Furnace igniter, burner assembly, gas valve, gas leak detector, thermostat, thermocouple, blower motor, and PC Board.

SIGN AND DRIVE ROAD SIDE ASSISTANCE - Jump Start, Fuel Delivery, Tire Replacement, Lock-Out Service

ON-SITE SERVICE CALLS TRAVEL EXPENSES - Food and Lodging Reimbursement

FOOD SPOILAGE / FUEL REPLACEMENT



SERVICE CONTRACT: PREMIUM COVERAGE - (STATED COMPONENTS)

SUSPENSION SYSTEM - Leaf and coil springs, shackles and bushings and rubber suspension springs

AIR CONDITIONING - Compressor, evaporator, condenser, capacitors, relays, expansion valve, control module and panel, reversing valve, blower fan and motor and PC board ceiling ventilation fans and motors, thermostat and heat strips.

POWER STEPS - Power step, lines, fittings, cylinders, worm gears, electrical switches and wiring harness, entry door floor motor and mechanism.

LEVELING SYSTEM - Factory installed electric/hydraulic leveling jacks, controller, electrical switches and wiring harness.

INTERIOR AND EXTERIOR COMPONENTS - (factory/dealer installed only) - Door handles, latches and springs, hood latches and springs, door chimes, clock, power window curtain motors/shade motors, awning motor, awning mechanism, awning sensor, shore power cord and retractor.

ENTERTAINMENT COMPONENTS - (factory/dealer installed only) - Stereo receiver, CD player, 40" or smaller television set(s), tuner, DVD player, satellite system, television antenna and rotator.

GENERATOR/POWER PLANT COMPONENTS - Power plant engine block and cylinder heads, if damaged as a result of the failure of an internally lubricated part. All internally-lubricated parts contained within the power plant engine. Alternator, starter, manually-operated switches, voltage regulator, power converter-inverter, PC boards, fuel pump, hour meter.

FRESH/WASTE WATER - Shower assembly, toilet, sink, holding tanks, gate valves, macerator pump, water pump, faucets, traps, fittings, hot water tank, burner assembly, thermostat, thermocouple, gas valve, electronic ignition assembly, PC board, diesel/electric heating system, water purification system, and water lines.

LP GAS - Gas regulators, gas tanks, gas valves, tank gauges, LP lines and fittings, emergency shut off system, gas leak detector and carbon monoxide monitor.

SEALS AND GASKETS - Seals and Gaskets are covered for all listed parts.

WEAR AND TEAR - Normal wear and tear is covered for all parts of the UNIT except for what is listed in the Exclusions section.

DELUXE APPLIANCES - Icemaker, trash compactor, built-in coffee maker, built-in food processor, in-sink disposal, ceiling fan motor and smoke detector, dishwasher, basement refrigerator/freezer, central vacuum cleaner system, fold out external grill and clothes washer/dryer.

CRANK SYSTEM (POP-UP CAMPER) - Cables, pulleys and metal frame.

BRAKE SYSTEM - Wheel cylinders, calipers, magnets, master cylinder, metal-only hydraulic tubing and metal fittings, drums and rotors (when in conjunction with a covered repair).

KITCHEN CENTER - Range/oven burner assembly, burner valves, refrigerator/freezer, microwave, convection oven, thermostat, thermocouple, burner, igniter and PC board.

SLIDE OUT SYSTEM - Slide out room motor(s), guides, tracks and hydraulic valves, sliding floor motor, pump/jack assembly, electrical switches and wiring harness.

HEATING - Furnace igniter, burner assembly, gas valve, gas leak detector, thermostat, thermocouple, blower motor, and PC Board.

SIGN AND DRIVE ROAD SIDE ASSISTANCE - Jump Start, Fuel Delivery, Tire Replacement, Lock-Out Service

ON-SITE SERVICE CALLS TRAVEL EXPENSES - Food and Lodging Reimbursement

FOOD SPOILAGE / FUEL REPLACEMENT



LIMITED WARRANTY: RV WARRANTY FOR LIFE COVERAGE

SUSPENSION SYSTEM - Leaf and coil springs, shackles and bushings and rubber suspension springs

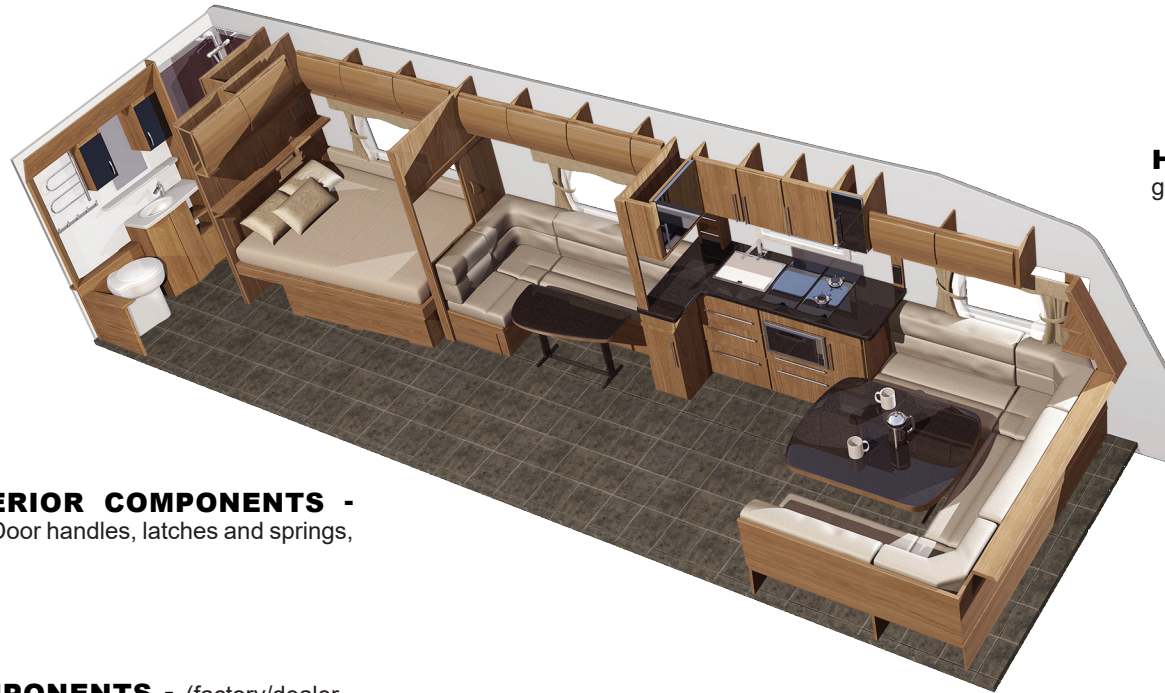
AIR CONDITIONING - Compressor, evaporator, condenser, capacitors, relays, expansion valve, control module and panel, reversing valve, blower fan and motor and PC board

FRESH/WASTE WATER - Shower assembly, toilet, sink, holding tanks, gate valves, macerator pump, water pump, faucets, traps, fittings

LP GAS - Gas regulators, gas tanks, gas valves, tank gauges, LP lines and fittings

BRAKE SYSTEM - Wheel cylinders, calipers, magnets

KITCHEN CENTER - Range/oven burner assembly, burner valves, refrigerator/freezer, microwave, convection oven, thermostat, thermocouple, burner, igniter and PC board.



HEATING - Furnace igniter, burner assembly, gas valve

INTERIOR AND EXTERIOR COMPONENTS - (factory/dealer installed only) - Door handles, latches and springs, hood latches and springs

ENTERTAINMENT COMPONENTS - (factory/dealer installed only) - Stereo receiver, CD player, 40" or smaller television set(s)

DELUXE APPLIANCES - Icemaker, trash compactor, built-in coffee maker, built-in food processor, in-sink disposal, ceiling fan motor and smoke detector



Coverage Comparison of Limited RV Warranty for Life Coverage and Typical Service Contract.
Service contract and coverage illustrated is typical coverage and may differ from your service contract.

EXCLUSIONS FOR LIMITED RV WARRANTY FOR LIFE

THIS AGREEMENT DOES NOT PROVIDE COVERAGE FOR THE FOLLOWING:

1. FOR COSTS OR EXPENSES REPORTED OR MADE AFTER THE EXPIRATION OF THE TERM OF THIS AGREEMENT OR NOT PREVIOUSLY AUTHORIZED BY THE ADMINISTRATOR; FOR REPAIRS TO PARTS OF THE UNIT SPECIFICALLY EXCLUDED IN THIS SECTION OF THIS AGREEMENT.
2. MECHANICAL BREAKDOWNS OUTSIDE THE CONTINENTAL UNITED STATES OF AMERICA, ALASKA, HAWAII AND CANADA.
3. FOR COSTS OR EXPENSES WHILE OWNED BY YOU IF THE UNIT HAS BEEN USED FOR COMMERCIAL PURPOSES, UNLESS COMMERCIAL USE SURCHARGE IS SELECTED AND PAID, OR RACING; FOR REPAIR COSTS WHEN THE PURPOSE IS TO RAISE COMPRESSION OR CORRECT OIL CONSUMPTION WHICH INCLUDES: WORN RINGS, WORN OR BURNED VALVES; OR REPAIR EXPENSES CAUSED BY A BROWN OUT UNLESS THE SURCHARGE HAS BEEN SELECTED AND PAID.
4. FOR COSTS OR EXPENSES IF YOU CANNOT PROVIDE TO THE ADMINISTRATOR ACCURATE RECORDS PROVING THAT YOU HAVE MAINTAINED THE UNIT IN ACCORDANCE WITH THE MANUFACTURER'S SPECIFICATIONS AND INSTRUCTIONS, OR IF ANY MECHANICAL ALTERATIONS HAVE BEEN MADE BY YOU TO THE UNIT, INCLUDING, BUT NOT LIMITED TO: THE USE OF OVERSIZED TIRES; FRAME OR SUSPENSION MODIFICATIONS; OR REMOVAL OF ANY EMISSION CONTROL PARTS SYSTEM.
5. FOR COSTS OR EXPENSES IF THE REPAIR IS COVERED UNDER THE MANUFACTURER'S WARRANTY; RECALL BY THE MANUFACTURER; MANUFACTURER'S SPECIAL POLICY; ANY OTHER AGREEMENT; ANY WRITTEN WARRANTY OR ANY VALID COLLECTIBLE INSURANCE POLICY (REGARDLESS OF WHETHER OR NOT THE GUARANTOR IS DOING BUSINESS AS AN ON GOING ENTERPRISE.)
6. FOR COSTS OR EXPENSES IF THE UNIT HAS BEEN ABUSED OR NEGLECTED, OR ANY PART OF IT HAS BEEN SUBJECT TO ALTERATION OR ACCIDENT, OR FOR FAILURE TO PROPERLY OPERATE THE UNIT; OR FOR ANY LOSS OR DAMAGE RESULTING FROM ROAD HAZARDS, COLLISION OR UPSET, FALLING OBJECTS, FIRE, SMOKE, SOOT, THEFT, ARSON, EXPLOSION, LIGHTNING, EARTHQUAKE, WINDSTORM, ICE, HAIL, WATER, SUBMERSION, FLOOD, FREEZING OR ICE DAMAGE, CONTACT WITH BIRD OR ANIMAL, BREAKAGE OF GLASS, DAMAGE CAUSED BY DETONATION, PRE-IGNITION, CARBON OR SLUDGE; CONTAMINATION OF ANY NATURE, DISCHARGE OF ANY NUCLEAR WEAPON, CORROSION, RUST, ELECTROLYSIS, DETERIORATION, CONDENSATION, REVERSE POLARITY, FAILURE OR LOOSENING OF EXTERNAL FASTENERS OR BOLTS; MALICIOUS MISCHIEF, VANDALISM, RIOT OR CIVIL COMMOTION, WAR (DECLARED OR UNDECLARED), CIVIL WAR, INSURRECTION, REBELLION, OR REVOLUTION; OR IF THE UNIT IS A TOTAL LOSS, HAS BEEN REPOSSESSED OR IS THE SUBJECT OF A REPOSSESSION ACTION, OR FROM ANY OTHER CAUSE WHATSOEVER, EXCEPT AS OUTLINED IN THIS AGREEMENT.
7. FOR LIABILITIES FOR DAMAGE TO PROPERTY OR FOR INJURY TO OR DEATH OF ANY PERSON ARISING OUT OF THE OPERATION, REPAIR, MAINTENANCE OR USE OF THE UNIT, WHETHER OR NOT RELATED TO ANY COVERED PART, OR FOR CONSEQUENTIAL LOSSES OR DAMAGE, UNLESS SPECIFICALLY COVERED HEREIN.
8. FOR ANY MECHANICAL PROBLEMS THAT EXISTED PRIOR TO THE PURCHASE OF THIS AGREEMENT OR FOR REPAIR COSTS OR EXPENSES IF A BREAKDOWN IS DIRECTLY OR INDIRECTLY CAUSED BY OVERHEATING OF ANY COVERED PART OR NON-COVERED PART OR BY THE FAILURE OF THE AGREEMENT HOLDER TO MAINTAIN PROPER QUALITIES OR LEVELS OF COOLANTS, FLUIDS OR LUBRICANTS; OR DAMAGE RESULTING FROM CONTINUED OPERATION IN A FAILED CONDITION.
9. FOR REPAIRS OR REPLACEMENT TO ANY PART THAT HAS NOT SUFFERED A BREAKDOWN, OR FOR REPAIR COSTS NOT NECESSARY TO CORRECT A BREAKDOWN, OR FOR DAMAGES OR ANY LOSS RESULTING FROM FAULTY OR NEGLIGENT REPAIR WORK OR FROM THE INSTALLATION OF DEFECTIVE PARTS; OR DAMAGE CAUSED TO, OR CAUSED FROM, A NON-COVERED PART (UNLESS CONSEQUENTIAL LOSS COVERAGE SURCHARGE IS SELECTED AND PAID); OR DAMAGE TO THE VEHICLE BEING TOWED BY THE UNIT (IF ANY) REGARDLESS IF THE DAMAGE IS CAUSED BY THE FAILURE OF A COVERED PART; OR FOR RETROFITTING DUE TO UNAVAILABILITY OF PARTS;
10. FOR ANY OF THE FOLLOWING REPAIRS, SERVICES OR SUPPLIES: AWNING MATERIAL, FRAME, STRUCTURAL DAMAGE, ADJUSTMENTS, ALIGNMENTS, BEDDING, BOWED WALLS OR CEILINGS, BUMPERS, CABINERY; CABLE, SATELLITE AND TELEPHONE WIRING; CARPET, CANVAS, CAULKING OR GROUTING, CEILINGS, COSMETIC DAMAGE, DELAMINATION, DISCOLORATION OF ANY MATERIAL, COUNTERTOPS, DOORS, CARPET, FLOORING (WOOD, HARD SURFACE AND RESILIENT), FURNITURE, GLASS, GLAZING, GLUING COMPOUNDS, KNOBS OR DIALS, NON-FACTORY INSTALLED AUDIO SYSTEMS AND DISC PLAYERS, NON-FACTORY OR NON-DEALER INSTALLED COMPONENTS, HAZARDOUS WASTE REMOVAL, LOOSE FASTENERS OR CONNECTIONS, LOUVERS, MAINTENANCE SUPPLIES OR SERVICES, MICROWAVE OR OVEN MEAT PROBES OR ROTISSERIES, RACKS, SHELVES, BASKETS OR BUCKETS, ROOFING MATERIALS, SEALANTS, SHEET METAL, SIDING, SHOP SUPPLIES, SQUEAKING, WARPING OR UNEVEN FLOORS, RAMPS, TIRES AND WHEELS/COVERS, UPHOLSTERY, VANITIES, VENTS, WALLS, WASHERS, WATER LEAK REPAIRS (OTHER THAN PLUMBING), WEATHER STRIPPING, WHEEL BALANCING, WIND NOISES, RETRACTABLE SCREENS, WINDOW SHADES, TREATMENTS AND DRAPERIES, WINDOWS, WOOD FRAMING, WOODWORK AND MILLWORK.
11. FOR ANY OF THE FOLLOWING PARTS: BATTERY, BATTERY CABLES, BRAKE PADS AND SHOES, BRAKE ROTORS AND DRUMS (UNLESS IN CONNECTION WITH A COVERED PART FAILURE), BRIGHT METAL PARTS, CARBURETOR, CELLULAR PHONES, COOLANTS AND FLUIDS (UNLESS IN CONNECTION WITH A COVERED PART FAILURE), DISTRIBUTOR CAP, DISTRIBUTOR ROTOR, DRIVE BELTS, EGR VALVE, EXHAUST PIPES, CATALYTIC CONVERTER, MUFFLER, RESONATORS, FILTERS, WATER PURIFICATION FILTERS, WATER SEPARATORS, FREIGHT, GLOW PLUGS, HOSES OR LINES NOT SPECIFICALLY LISTED IN SCHEDULE OF COVERAGES SECTION, INFRARED SYSTEMS, LIGHT BULBS, SEALED BEAMS, LENSES; MANUAL CLUTCH ASSEMBLY, MANUAL CLUTCH HYDRAULICS, LINKAGE AND PEDAL, METAL OR PLASTIC TRIM, PAINT AND COSMETIC REPAIRS, PERSONAL COMPUTERS, RATTLES, RUBBER MOLDINGS, WEATHER STRIPS, SAFETY RESTRAINT SYSTEMS (AIR BAGS AND SEATBELTS), SHOCK ABSORBERS, SPARK PLUGS, SPARK PLUG WIRES, STORAGE, ENGINE THERMOSTAT, TUNE UP, WIPER ARMS AND WIPER BLADES.
12. FOR ANY COMPONENTS INCLUDED IN ANY OF THE OPTIONAL SCHEDULE OF COVERAGES SECTION UNLESS THE OPTION AND SURCHARGE HAS BEEN ELECTED ON THE DECLARATION PAGE.

